

SPECIFICATION OF DLB KUROSHIO



DERRICK / LAY BARGE "KUROSHIO"

1. GENERAL

Name	: DLB KUROSHIO (K-1)
Type	: Non-propelled, steel flat bottom type Derrick & Lay Barge, right ramp
Year of Construction	: January, 1972 March, 1984 (Derrick Crane Upgrade) June, 1996 (Hull Modification Upgrade) March, 1998 (Derrick Crane Upgrade) January, 2000 (Additional Accommodation) December, 2009 (Living Quarter Upgrade)
Condition of Barge	: Good
Classification	: ABS Maltese Cross +A-1 E
Gross Reg. Tonnage	: 15,983 tons (ABS)
Length	: 465.9 ft (142 m)
Width	: 131.2 ft (39.99 m)
Depth	: 29.3 ft (8.93 m)
Towing Draft	: about 14 ft (4.3 m)
Operating	: 14 ft - 18 ft (4.3 m - 5.5 m)
Displacement	: 25,346 tons
Accommodations	: Air-conditioned quarters for 323 men
Galley	: All necessary messing facilities to support 323 men
Hospital	: An attendant and equipped clinic for immediate first aid (2 beds)
Helideck	: 72 ft x 72 ft with loading capacity for SIKORSKY S-61N class
F.O. Storage Capacity	: 2,355.3 m ³
F.W. Storage Capacity	: 2,259 m ³
Ballast Capacity	: 7,761.9 tons
Fresh Water Maker	: 100 tons/day x 2 sets
Deck Storage	: 1,700 m ² (wooden deck) 4.4 - 28 tons/m ²

2. ANCHOR & MOORING SYSTEM

1) Mooring Winch

Type	: KITAGAWA single drum, electric driven
Stall	: 146 tons
Rating	: Max. 60 tons x 18 m/min. Min. 6 tons x 182 m/min.

SPECIFICATION OF DLB KUROSHIO



Brake : 200 tons
Wire : 6 x Fore lines, 4 x Aft lines
56mm Ø x 1,700 m
Anchor : Delta Flipper 12 tons x 8 sets

2) Anchor Windlass

Capacity : 32 tons x 9 m/min.
Chains : 70 mm (Gr. 2) x 12 shots
Anchor : Stockless 6,450 kg
Number : 2 sets

3. DERRICK CRANE

Type : GUSTO-SHI E2500/2000 DB-B
Main : 2,500 S.tons at 30.5 m radius
Main : 2,500 S.tons at 40 m radius with tiebacks fitted in fixed over stern lifting mode
Aux. No. 1 : 800 S.tons at 65 m radius
Aux. No. 2 : 300 S.tons at 95 m radius
Whip Line : 80 S.tons at 100 m radius
Boom Length : 72.5 m / 11.66 m / 6.54 m / 4.98 m
Slewing : 0.3 rpm

4. AUXILLIARY EQUIPMENT

- 1) Shipboard Power
Diesel Generator : CAT 3606TA 1820 kw x 3 sets
800 KVA x 1 unit
- 2) Air Compressor
Diesel : Hokuetsu Industries Co. Ltd. x 3 sets
PDSH 850S / J750S
- 3) Jetting Pump
Motor Driven : Double Suction Multistage Volume Pump
No.1: 5.7 m³/min. x 180 m x 1 set
No.2: 5.95 m³/min. x 180 m x 1 set
- 4) Crawler Crane
Type : KOBELCO 7250-2F
Main Hoist : 54 MT (12.5 m) 70 MT Hook

SPECIFICATION OF DLB KUROSHIO



Aux. Hoist : 13.5 MT
Boom Length : 51.8 m

5) Service Winches

Type : Mitsubishi Heavy Industries
Electric-hydraulic twin drum
Rating : Max. 10 tons x 24 m/min.
Brake : 15 tons
Wire : 32 mm Ø x 500 m x 2 lines
Number : 2 sets

6) Pipelay Stations

Welding Stations : 4 stations
NDT Station : 1 station
Repair Station : 1 station
Coating Station : 1 station

7) Tensioning System

Type : WESTERN GEAR LPT 150S
Capacity : 68 MT x 1 set

8) Laydown Winch

Type : KITAGAWA, auto-tension
Single drum diesel driven
Rating : Max. 90 m tons
Brake : 215 tons
Wire : 56mm x 1,000 m
Number : 1 set

9) Davit System

Removable : 50 tons x 5 sets

10) Pipelay Stinger

Rigid Type : 40 m x 2 units

5. NAVIGATION & COMMUNICATION SYSTEM

1) Navigation Equipment

Radar : JRC
NCT-27

SPECIFICATION OF DLB KUROSHIO



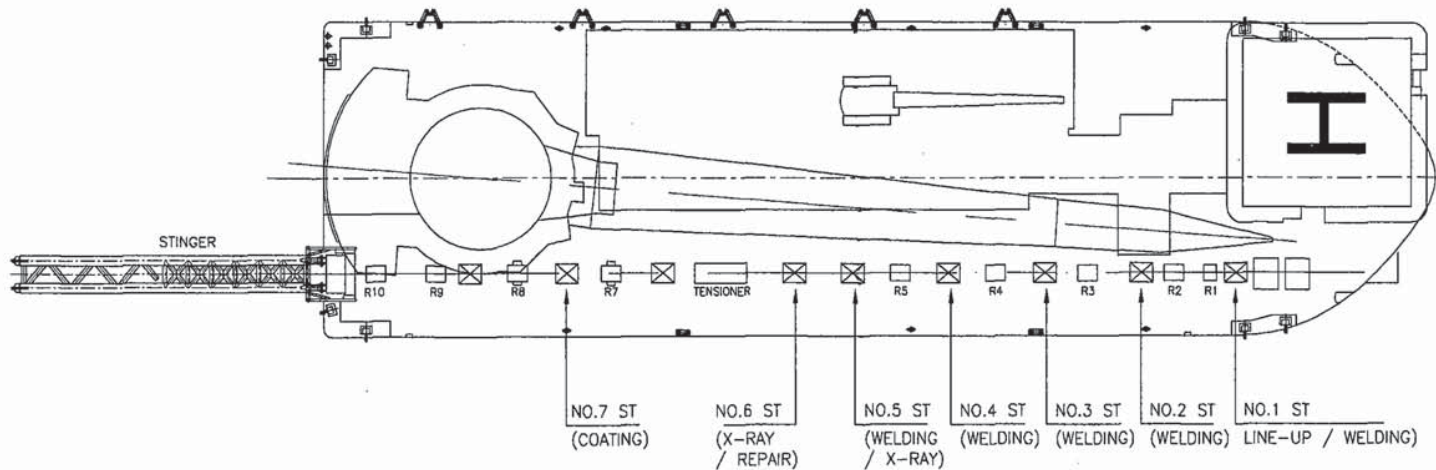
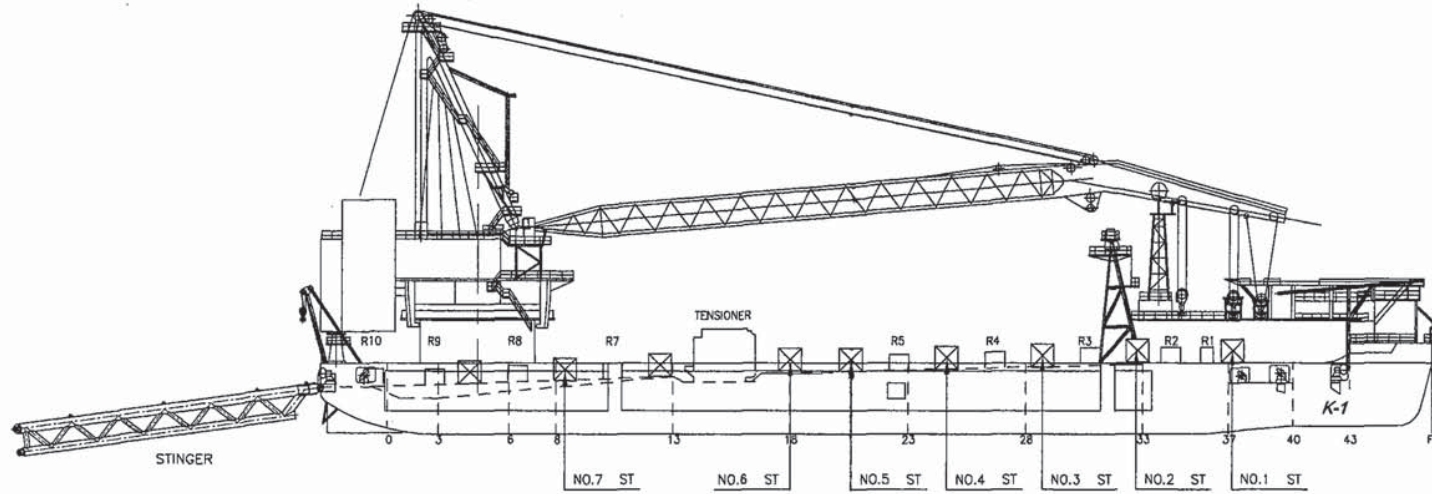
Gyro compass : TOKYO KEIKI CO.
ES-11A
Echo sounder : JRC
JFE-570S
Wind Indicator : KOSHIN DENKI KOGYO
F-35-1 6A & MP-3800

2) Communication equipment

IF/H S-SSB : JRC.JSB-450 type, 1.6 - 2,999 MHz, 400/800W
Marine VHF : JRC.JHV-227 type. All channels, 20 W
Inmarsat "B" : JRC.JUE-300 B type, Tel / Telex / Fax
Inmarsat "M" : SP 1600 M Tel / Fax / Data
Beacon : LWX-100A, 200 - 535 Khz, 100W
Air Band Radio : BECKER Type # GK415 / AR4201, 118 – 136KHz
V-sat : 512Kbps or 1Mbps Dedicated Satellite bandwidth on T-18 (Duplex)

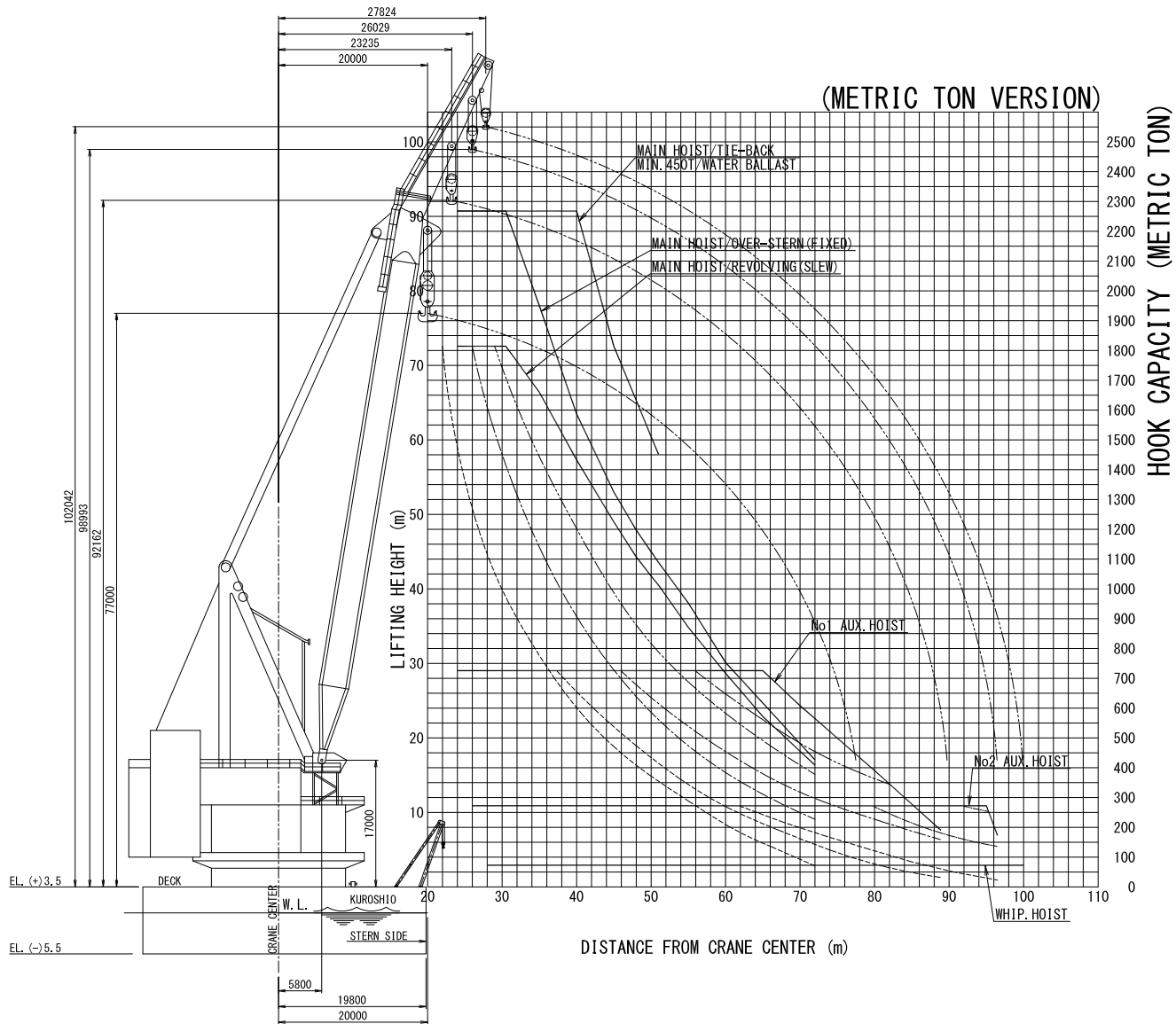
BARGE PARTICULARS:-

LENGTH (O.A.) = 142.0 M
 BREADTH = 40.0 M
 DEPTH = 9.0 M
 DRAFT (DESIGN) = 5.5 M
 DISPLACEMENT = 25,346 M.TONS
 GROSS TONNAGE = 14,552 TONS
 NET TONNAGE = 4,365 TONS



GENERAL LAYOUT OF EQUIPMENT ON K-1

STANDARD DRAWING	DWG.NO: SK-001
GENERAL LAYOUT OF EQUIPMENT ON KUROSHIO-1	DATE: JUL 2002
NIPPON STEEL & SUMIKIN ENGG. CO., LTD	REV.NO. -



—————	WITH 1,492 TON (100%)
—————	WATER BALLAST
-----	WITHOUT
-----	WATER BALLAST
-----	WITH 450 TON (30%)
-----	WATER BALLAST
-----	WITH 900 TON (60%)
-----	WATER BALLAST

KUROSHIO 2268MT (2500 S. T.)
LIFTING CAPACITY CURVE